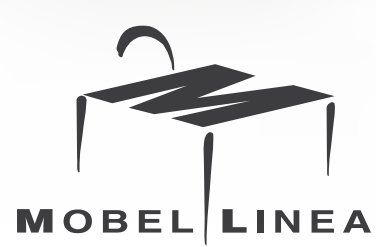


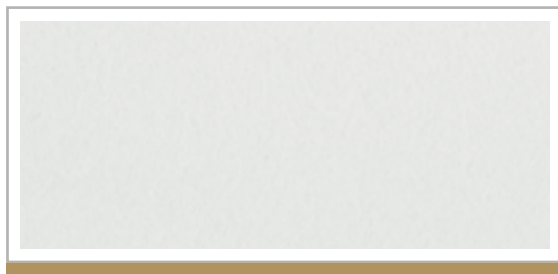
ACABADOS ACABATS FIN  
FINITIONS FINISHES AUS  
NS FINIS AUSFÜHRU  
AUSFÜ ACABA  
EN ACABATS  
FINITI ES AUS  
S FIN ÜHRUN  
AUSFÜ ACABA  
EN ACABATS  
FINITI ES AUS  
S FIN ÜHRUN  
AUSFÜ ACABA  
EN ACABATS  
FINITIONS SHES AUS  
S FINISHES AUSFÜHRUN  
AUSFÜHRUNGEN ACABA



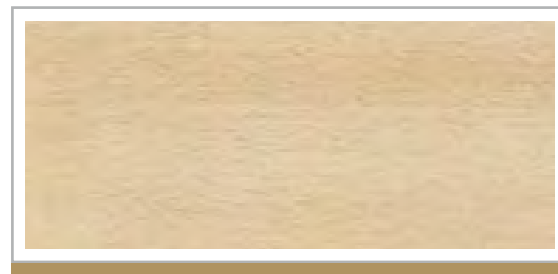
 **25 mm**

 **19 mm**

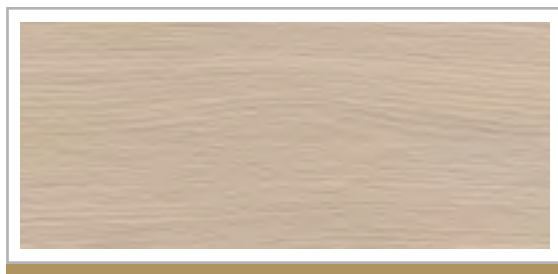
Grosor  
Gruix  
Épaisseur  
Thickness  
Dicke



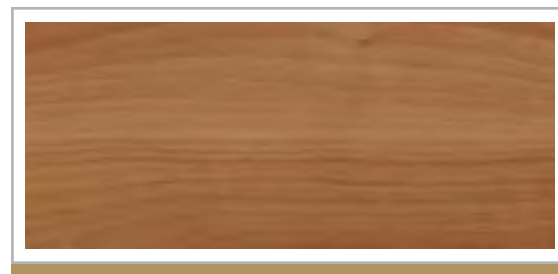
**Gris / Gris**  
/ Gris / Grey / Lichtgrau



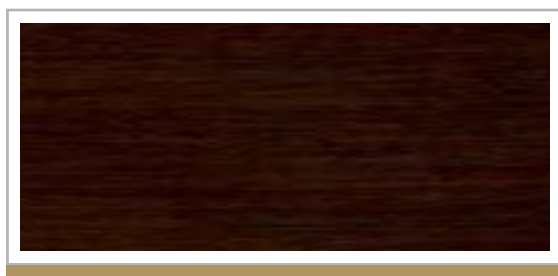
**Haya / Faig**  
/ Hêtre / Beech / Buche



**Roble / Roure**  
/ Chêne Moyen / Maple / Eiche



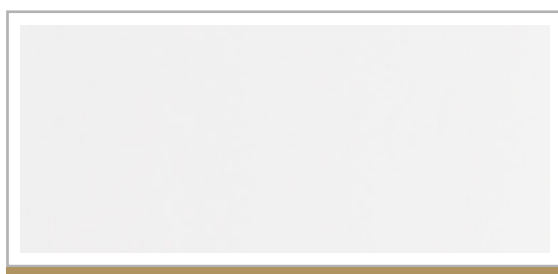
**Peral / Perera**  
/ Poirier / Pear / Birne



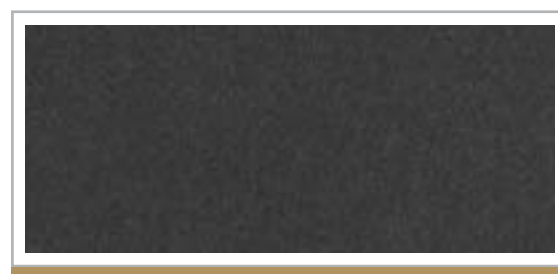
**Wengué / Wengué**  
/ Wengé / Wenge / Wenge



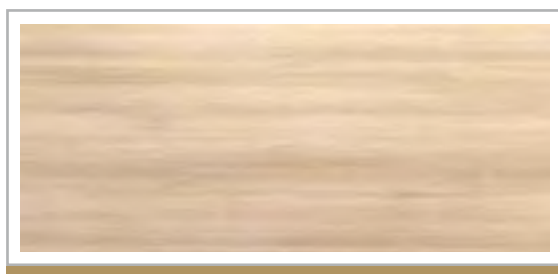
**Plata / Plata**  
/ Argenté / Silver / Kristallsilber



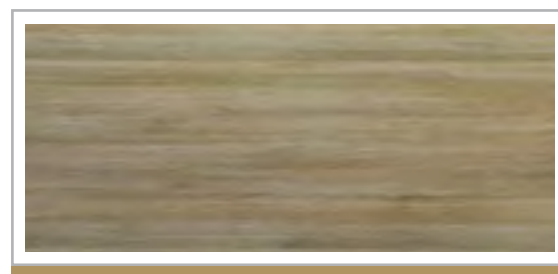
**Blanco / Blanc**  
/ Blanc / White / Weiß



**Grafito / Grafit**  
/ Anthracite / Graphite / Anthrazit



**Acacia Clara / Acàcia Clara**  
/ Acacia Clair / Light Acacia / Akazie Hell



**Acacia Oscura / Acàcia Fosca**  
/ Acacia Foncé / Dark Acacia / Akazie Dunkel

Melamina o  
Estratificado

Melamina o  
Estratificat

Mélamine ou  
Stratifié

Melamine or  
HPL

Melamin oder  
Oberfläche  
Laminat

 **25 mm**

 **19 mm**

Grosor  
Cruix  
Épaisseur  
Thickness  
Dicke

Melamina o  
Estratificado

Melamina o  
Estratificat

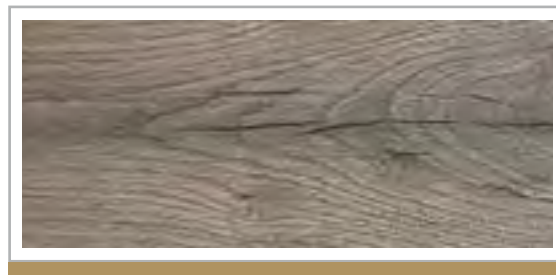
Mélamine ou  
Stratifié

Melamine or  
HPL

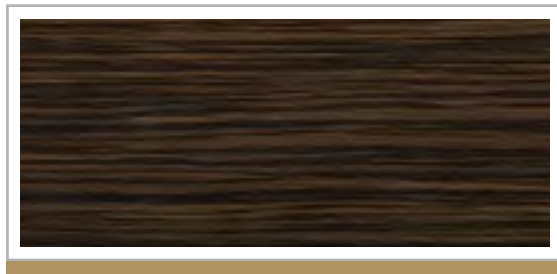
Melamin oder  
Oberfläche  
Laminat



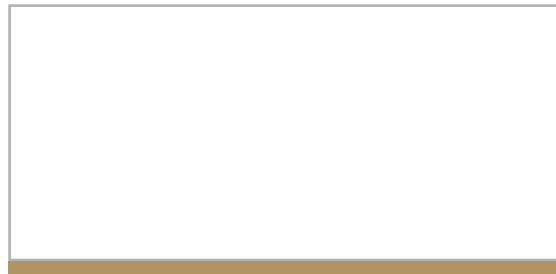
**Castaño claro / Castany clar**  
**/ Chêne Veiné / Oak / Eiche Hell**



**Castaño oscuro / Castany fosc**  
**/ Chêne Grisé / Dark Oak / Eiche Dunkel**



**Zebrano / Zebrano / Zebrano / Zebrano /**  
**Zebrano**



 **40 mm**

Grosor  
Cruix  
Épaisseur  
Thickness  
Dicke

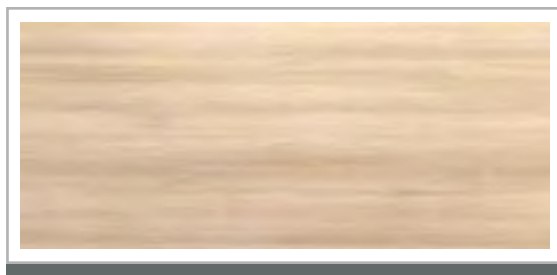
Melamina o  
Estratificado

Melamina o  
Estratificat

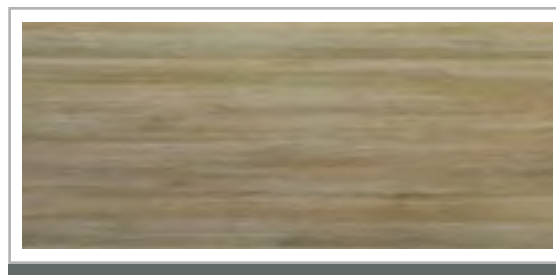
Mélamine ou  
Stratifié

Melamine or  
HPL

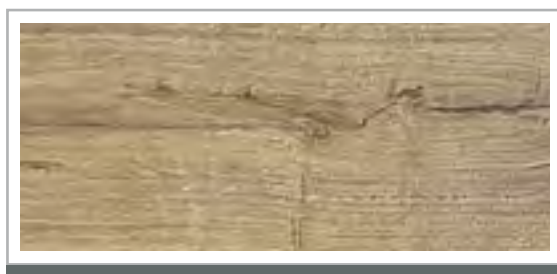
Melamin oder  
Oberfläche  
Laminat



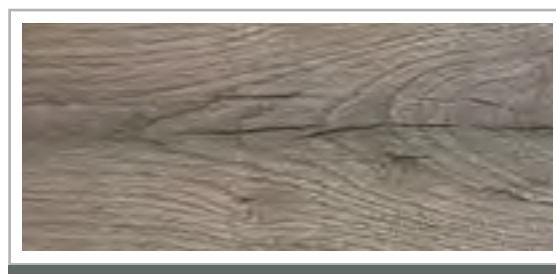
**Acacia Clara / Acàcia Clara**  
**/ Acacia Clair / Light Acacia / Akazie Hell**



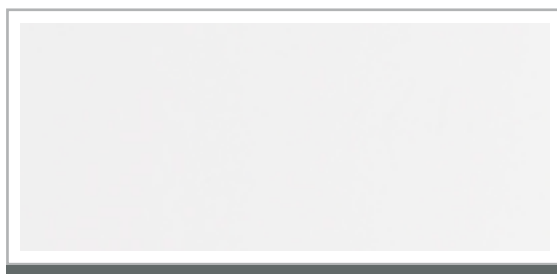
**Acacia Oscura / Acàcia Fosca**  
**/ Acacia Foncé / Dark Acacia / Akazie Dunkel**



**Castaño claro / Castany clar**  
**/ Chêne Veiné / Oak / Eiche Hell**



**Castaño oscuro / Castany fosc**  
**/ Chêne Grisé / Dark Oak / Eiche Dunkel**



**Blanco / Blanc**  
**/ Blanc / White / Weiß**



**Zebrano / Zebrano / Zebrano / Zebrano /**  
**Zebrano**

# LOK

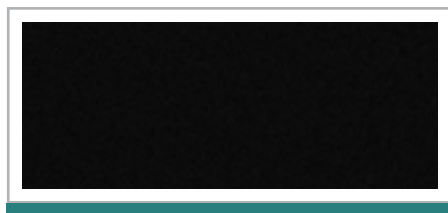


Grosor  
Gruix  
Épaisseur  
Thickness  
Dicke

Melamina  
Melamina  
Mélamine  
Melamine  
Melamin

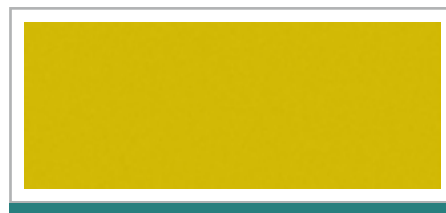
Metacrilato  
Metacrilat  
Méthacrylate  
Methacrylate  
Methacrylat

Acabados puertas COLOR / Acabats portes COLOR / Finitions portes en COULEUR  
/ Doors MATT - GLOSS finishes / Ausführungen Melamin - MEHRFARBIGE TÜREN



*Pantone Black C / Ral 9004*

**Negro / Negre**  
/ Noir / Black / Schwarz



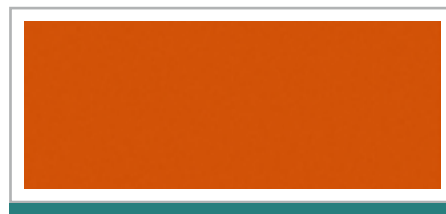
*Pantone 123 C / Ral 1021*

**Amarillo / Groc**  
/ Jaune / Yellow / Gelb



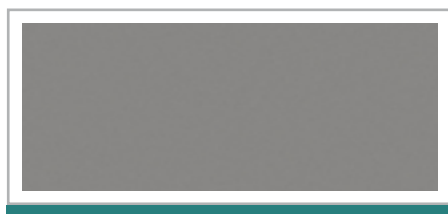
*Pantone 180 C / Ral 3020*

**Rojo / Vermell**  
/ Rouge / Red / Rot



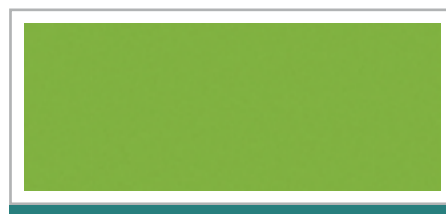
*Pantone 1575 C / Ral 2003*

**Naranja / Taronja**  
/ Orange / Orange / Orange



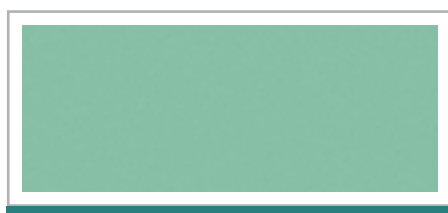
*Cool gray 5 C / Ral 7004*

**Gris / Gris**  
/ Gris / Dark Grey / Grau



*Pantone 376 C*

**Verde / Verd**  
/ Vert / Green / Grün



*Pantone 2247 C / Ral 6019*

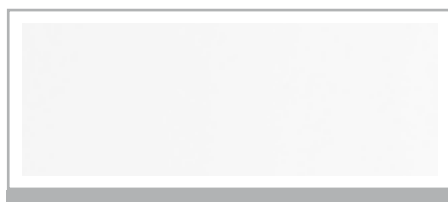
**Verde Turquesa / Verd Turquesa**  
/ Vert turquoise / Turquoise Green  
/ Türkisgrün



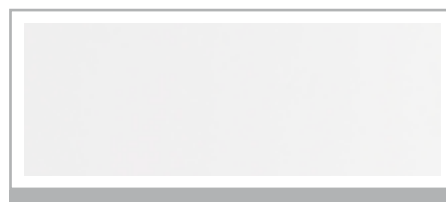
*Pantone 7455C / Ral 5002*

**Azul / Blau**  
/ Bleu / Blue / Blau

Para plafones y mamparas / Per a plafons i mampares / Pour cloisonnettes et  
cloisons / For screens and partitions / Für Sichtblenden und Trennwände



**Transparente / Transparent**  
/ Transparent / Clear / Klar



**Translúcido / Translúcid**  
/ Blanc Opaque / Translucent / Opak

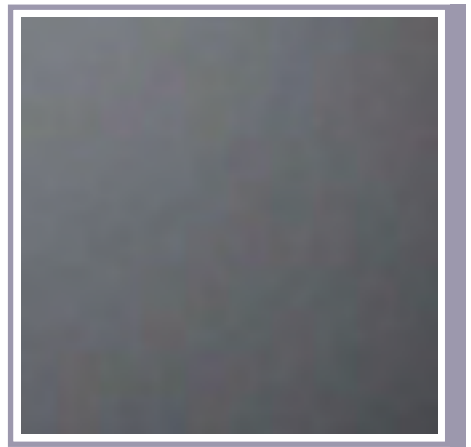
Únicamente para  
Únicament per a  
Uniquement pour  
Only for  
Nur für

# metálica



(RAL 7035)

**Gris / Gris**  
/ Gris / Grey / Lichtgrau Met.



(RAL 7015)

**Grafito / Grafit**  
/ Graphite / Textured graphite  
/ Anthrazit Met.



(RAL 9006)

**Plata / Plata**  
/ Argenté / Silver / Silber Met.



(RAL 7022)

**Grafito Metalizado / Grafit Metal·litzat**  
/ Graphite / Graphite / Anthrazit Met.



(RAL 9016)

**Blanco / Blanc**  
/ Blanc / White / Weiß Met.



(RAL 9005)

**Negro / Negre**  
/ Noir / Black / Schwarz Met.

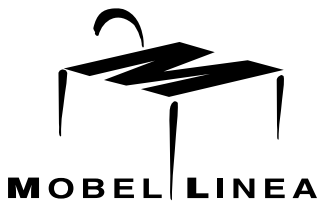


**Cromado / Cromat**  
/ Chromé / Chrome / Verchromt

**Aluminio Pulido / Alumini Polit**  
/ Aluminium Poli / Polished aluminium  
/ Alu·poliert

**Metal**  
**Metall**  
**Métallique**  
**Metal**  
**STAHL-**  
**Ausführung**

ACABADOS ACABATS FIN  
FINITIONS FINISHES AUS  
NS FINISHES AUSFÜHRU  
AUSFÜHRUNGEN ACABAI  
EN ACABADOS ACABATS  
FINITIONS FINISHES AUS  
IS FINISHES AUSFÜHRUN  
AUSFÜHRUNGEN ACABAL  
EN ACABADOS ACABATS  
FINITIONS FINISHES AUS



Ctra. de Guissona, km 1  
25200 CERVERA (Lleida) SPAIN

**T (+34) 973 53 00 50**

F (+34) 973 53 06 49  
mobel@mobellinea.es  
[www.mobellinea.com](http://www.mobellinea.com)

Distribuidor / Distribuïdor / Distributeur / Dealer / Fachhändler

ML:2021/03

